



## Fire Door Sets

### Product overview:

A fire door is a specialized door designed and constructed to resist the spread of fire and smoke within a building or structure.

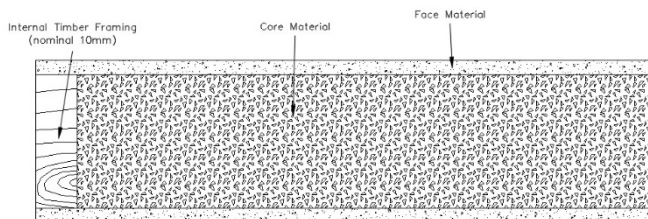
Australian Architectural Fire Doors manufacture a large variety of fire doors & can design and produce door sets to suit your specific needs.

We offer a complete range of Fire Door Sets including 1, 2, 3 & 4 hour fire ratings.

Fire Doors are required to be fitted with tested & approved components including closers, latching hardware, and fire-rated glass view windows.

AAFD manufacture to current Australian Standards & offer tested and approved systems.

### Fire Doors:

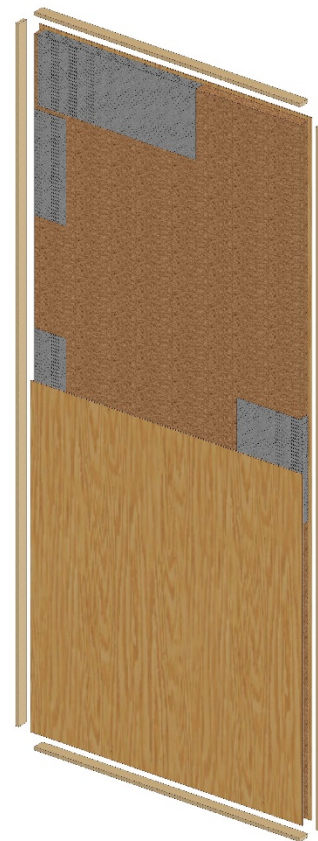


### Construction:

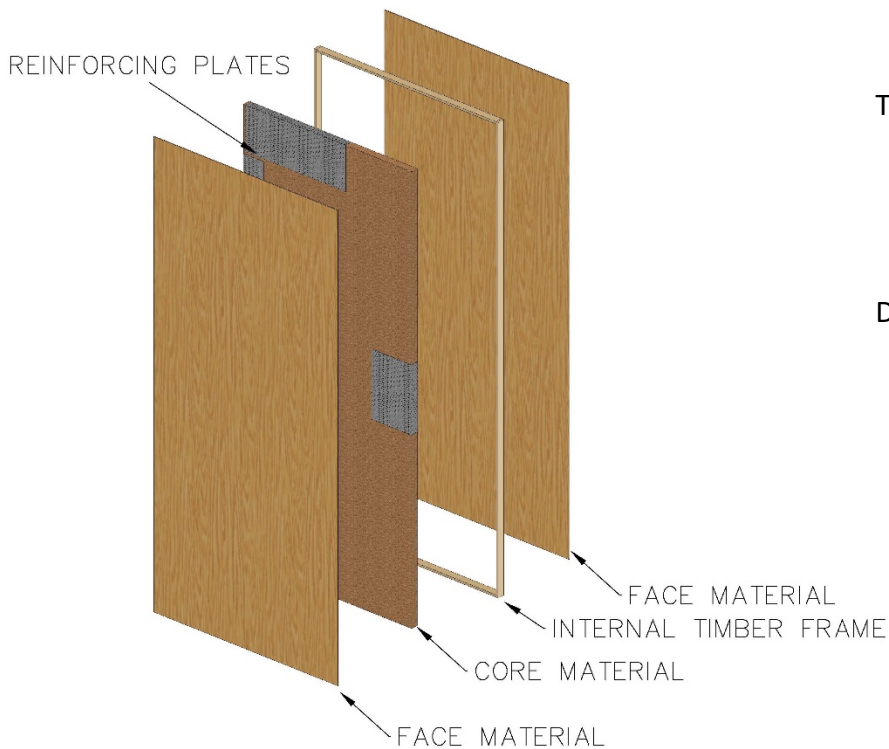
- Vermiculite monolithic refractory core
- Internal Timber edge strips
- Metal reinforcement to all hardware locations
- Door skin/face available in a variety of material options

### Finishes:

- STD
- HPL
- Veneer
- Metal (mild steel, aluminium, colour bond)



## Fire Doors:



### Types:

- Hinged
- Pivot
- Sliding
- Single & dual leaf

### Dimensions:

- Mini = 37mm thick - residential
- Maxi = 47mm thick – commercial

## Hardware & Seals:

Fire door sets are supplied standard with tested and approved fire rated hardware and seal combinations.

- Locksets
- Door Closers
- Door Strike shields
- Head latches
- Sequence selectors
- Door stops
- Architectural seals
- Stainless steel lettering & numbering
- Door signage
- Kick plates
- Intumescent Perimeter Seals
- Bottom Seals
- Automatic bottom Seals
- Meeting Stile Seals





**Extras:**

Fire-rated extras typically refer to additional components and features integrated into Fire Door Sets to enhance their fire resistance and safety measures. These extras are designed to meet specific fire-rated standards and regulations.

AAFDs fire-rated extras include:

- Metal Cladding
- Fire Rated Vision Panels
- Air Transfer Grilles
- Access Panels

**Fire Rated Metal Door Frames:**

Australian Architectural Fire Doors offer a diverse range of high quality fire rated metal door frames. Through our state of the art manufacturing facility, we can produce an array of sizes and specifications.

An important component of our fire rated door set system, our fire rated frames are tested and meet Australian Standards.

This ensures a tight seal, preventing fire spread, and reinforces the frame's structural integrity, safeguarding occupants and property. It is also an effective method used in acoustic door sets to reduce the spread of vibration and sound between spaces.



**Door Imaging:**

AAFD employs a cutting-edge method for on-site digital measurement of door frames. Utilizing innovative technology, we digitally survey the door frame's reveal through predetermined touchpoints, assessing for square and wind. This process generates a two-dimensional representation of the frame reveal. The measurement data is then used by our proprietary technology to machine custom doors in our factory.

These doors, complete with hardware preparations and precision sizing, are specifically tailored to match their respective frames. On-site installation by tradesmen is expedited due to the pre-machined nature of the doors, significantly reducing time and labour. Our streamlined manufacturing process ensures minimal margin of error and maximizes the precision of the final product



**Manufacturing Quality:**

- ISO 9001 Certified Quality Management Systems
- ISO 45001 Certified Safety Management Systems
- ISO 14001 Certified Environmental Management Systems
- ISO 26000 Certified Corporate Responsible Business



**Facilities & Equipment:**

**Door Facility**

- Flat bed router for dedicated core cutting
- 2023 3mt Wall Saw
- 2023 5 Daylight door press
- Secondary 4 Daylight door press
- Two back up cold presses
- Beam saw for trimming doors
- Back up 4-Axis router for door trimming

**Frame Facility**

- 2023 Flatbed 6 KW laser
- 3 Brake Presses
- 7 Dedicated welding bays
- Dedicated Backfilling area
- Newly refurbished 30 m2 Spray Booth

**Specialty Shops**

- 2023 5-Axis Router complete with ABS attachment
- Backup 2020 5-Axis Router
- 2022 Edge Bander for timber edge strips
- 200 m2 area specifically for value added product such as metal clads and vision panels



**Capacity**

With nearly 3 acres of manufacturing under roof, we have the best people and facilities.



**Custom Manufacture:**

With our commitment to precision manufacturing, we ensure that our customers receive fire doors of the highest quality.

Our doors can be customized to meet specific customer requirements, including the addition of vision panels, return air grilles, bolection molding, conduit for electric locks, rebating for architectural seals, meeting stiles, and the provision of all necessary architectural hardware.

**Available Sizes:**

**Mini- 37mm thick**

- MDF 1 hour rating available for sizes up to 2400 x 920 & 2350 x 1200
- Ply 1 and 2 hour ratings available for sizes up to 2400 x 920 & 2350 x 1200.

**Maxi- 47mm thick**

- MDF 1 hour rating available for sizes up to 3000 x 1500 & 3500 x 1200.
- Ply 1- 4 hour ratings available for sizes up to 3000 x 1500 & 3500 x 1200.

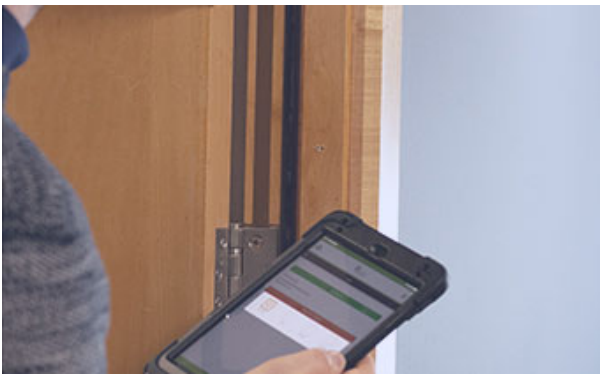
### Australian Standards:

Fire Door sets are a crucial safety component in constructions. They undergo rigorous testing to ensure they provide effective fire resistance, protecting lives and property. Complying with Australian standards guarantees that these architectural fire doors deliver the highest level of performance and reliability in emergency situations. All Australian Architectural Fire Doors are manufactured to meet current Australian Standards.



### Installation:

It is a requirement that all Fire Doors are to be installed in accordance with the Australian Standards. Australian Architectural Fire Doors are a trained & BCC Licenced company that can offer Sliding Fire Door installation, satisfying all requirements. Please refer to our fire door installation guide to ensure that your doors are installed correctly and in accordance with the Australian standards.



### Certification:

Fire doors must undergo rigorous testing and inspection processes to confirm their ability to withstand fire and smoke, protecting lives and property. Compliance with Australian Standards is vital. It is a requirement that all Fire Doors are to be installed in accordance with the Australian Standards. AAFD provide approved Fire Door systems & accredited certification.



### Maintenance Requirements:

Building owners and operators must adhere to maintenance requirements, as stipulated in AS1851, at a minimum, to ensure the effective operation of the system in emergency situations.

- **Routine Testing:** Fire doors should be tested regularly to ensure they operate as intended. This may include periodic checks of the door's closing mechanism, seals, and alarms.
- **Repairs and Upkeep:** Any damaged or malfunctioning components should be promptly repaired or replaced to maintain the door's fire resistance.
- **Annual Inspection:** Certified professional to conduct an annual inspection to ensure that the door complies with fire safety codes and regulations.
- **Documentation:** Maintaining records of inspections, repairs, and testing is crucial for compliance and liability purposes.