

# Solid Core Doors

## Product overview:

Australian Architectural Fire Doors supply & manufacture a variety of Solid Core Doors & can design and produce door sets to suit your specific needs, all made to current Australian Standards.

We supply tested & approved components including closers, latching hardware, and fire-rated glass view windows.

## Design options:

### 1. Core Material

- Solid Core
- Hollow Core
- LVL Core

### 2. Internal Timber Frame

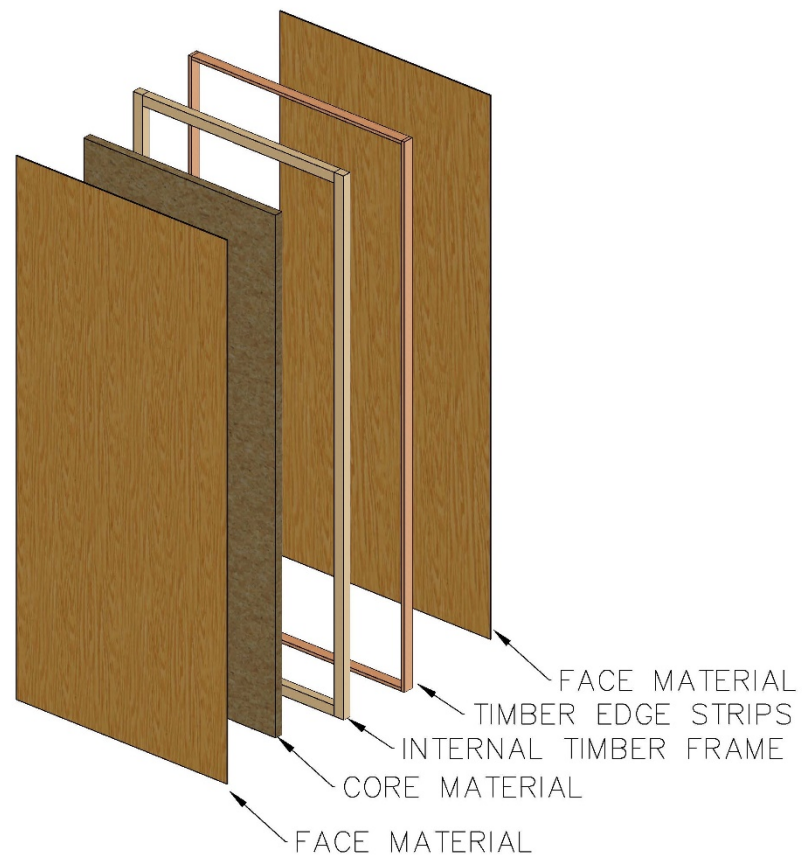
- 30mm All round

### 3. Hardwood External Edge Strips

- 12mm All round
- 12mm Vertical edges only
- No edge strip

### 4. Face Material

- MDF
- Plywood
- Select veneer
- Laminate facing



## Metal Cladding

Doors sheeted both faces & capped all edges

- |                |                    |
|----------------|--------------------|
| • 1.1mm ZA     | • 1.2mm 304 2B SSS |
| • 1.2mm GAL    | • 1.2mm 304 #4 SSS |
| • 0.6mm C/Bond | • 1.2mm 316 2B SSS |
|                | • 1.2mm 316 #4 SSS |

## Optional Extras

Lead Lining for Radiation Doors

Vision panels

Air grille preparations

Drop Seal preparations

**Internal Solid Core Door**

Recommended for internal applications only

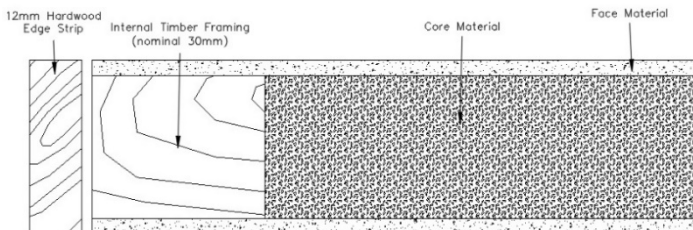
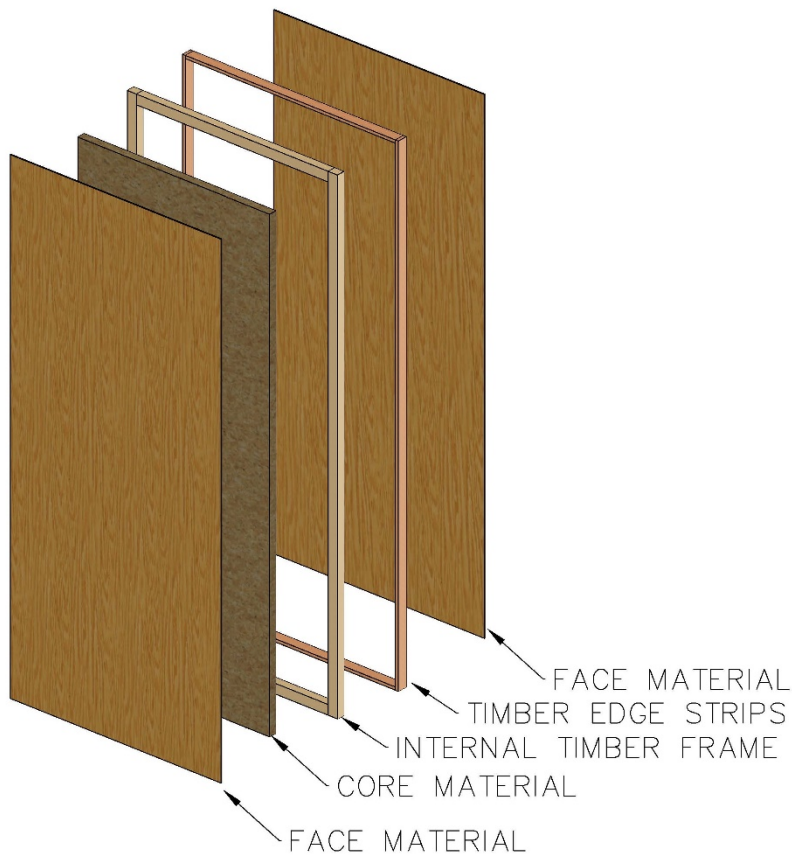
MDF or PLY facings available as a standard option

**Sizes**

2040 x 820	
2100 x 920	2100 x 1200
2400 x 920	2400 x 1200
2700 x 920	2700 x 1200
3000 x 920	3000 x 1200

**Thickness**

35mm
40mm
45mm



**Australian Standards:**

AAFD Solid Core doors are manufactured in accordance & compliancy with Australian Standard AS 2688 "Timber Doors"

**External LVB Core Door**

Recommended for internal & external applications

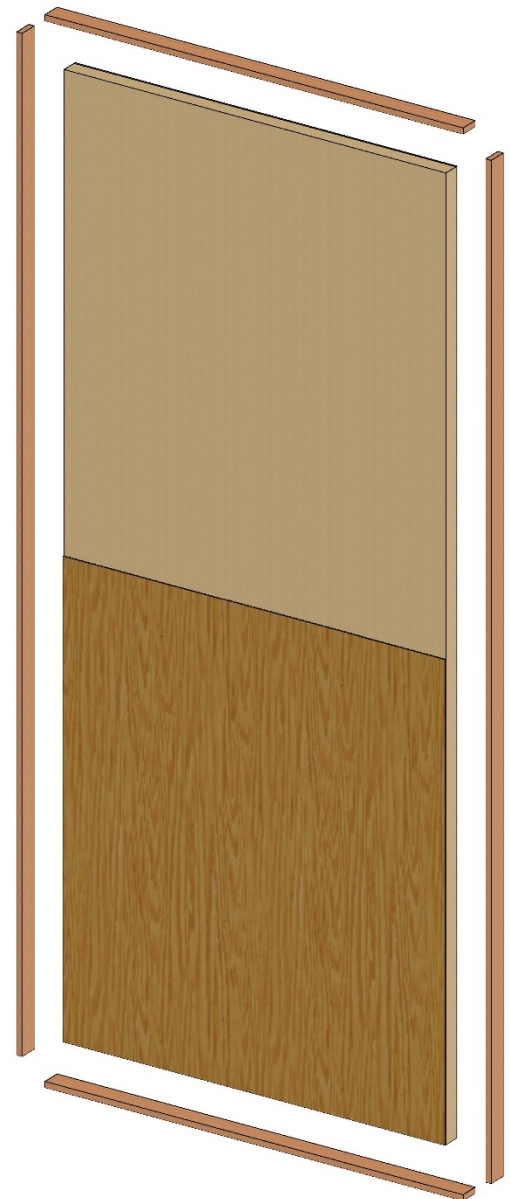
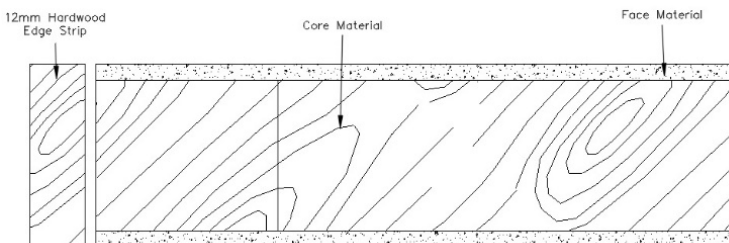
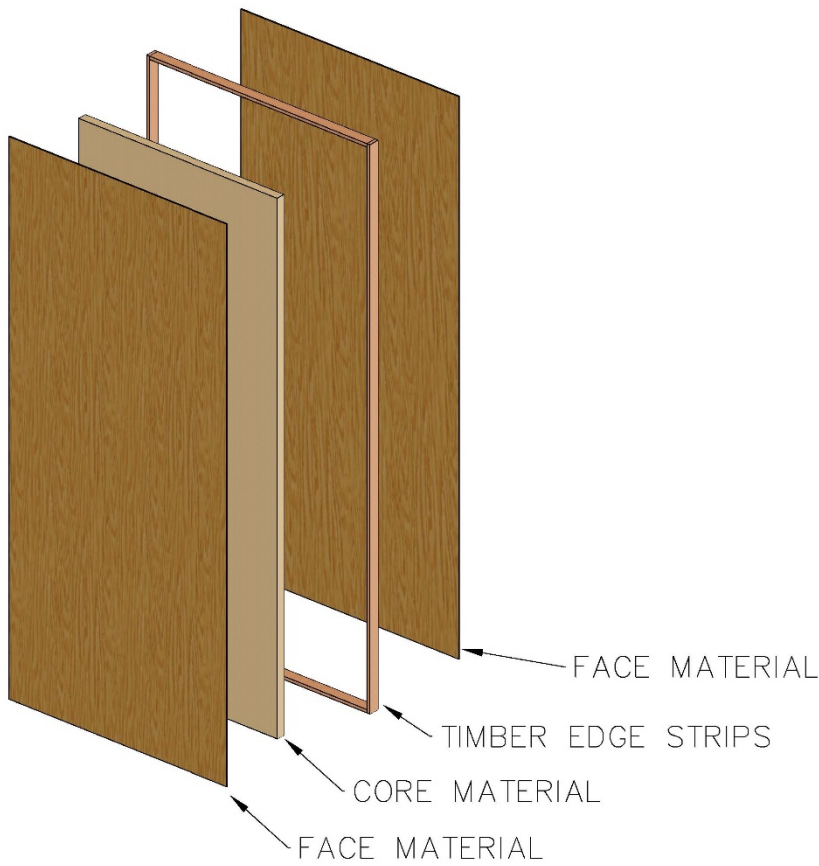
MDF or PLY facings available

**Sizes**

2040 x 820	2100 x 1200
2100 x 920	2400 x 1200
2400 x 920	2700 x 1200
2700 x 920	3000 x 1200
3000 x 920	

**Thickness**

35mm
40mm
45mm



**Australian Standards:**

AAFD Solid Core doors are manufactured in accordance & compliancy with Australian Standard AS 2688 "Timber Doors"

**Semi-Solid Hollow Core Door**

Manufactured with 90 – 100mm solid timber internal stiles & rails for internal applications only.

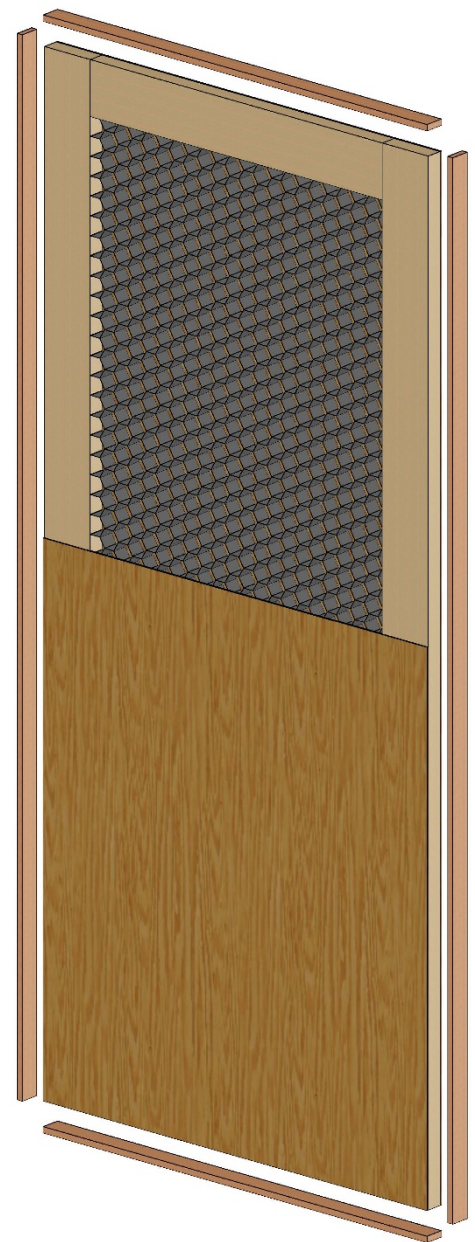
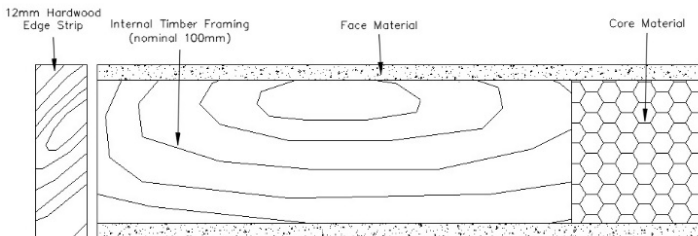
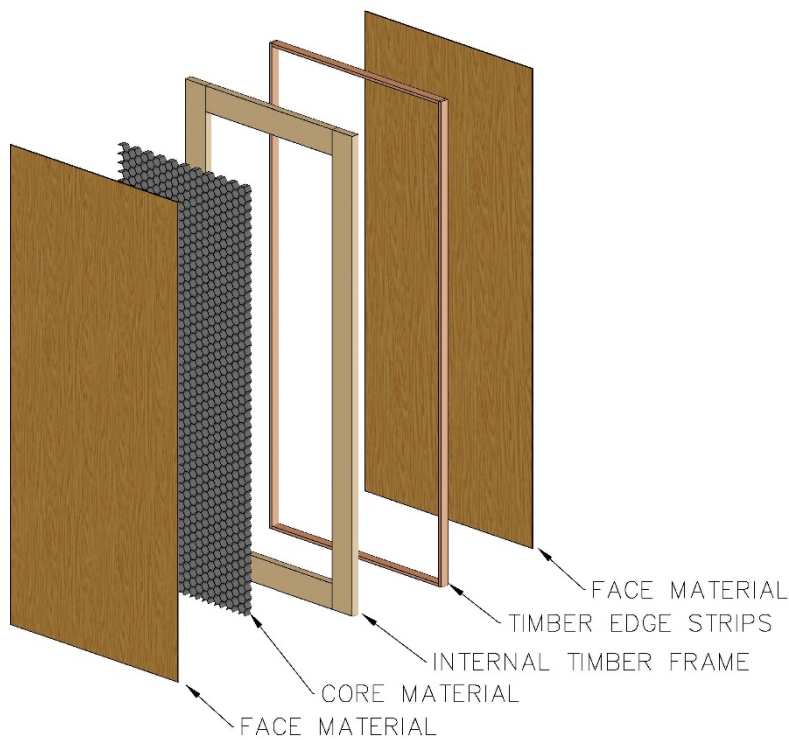
MDF or PLY facings available

**Sizes**

2040 x 820	2100 x 1200
2100 x 920	2400 x 1200
2400 x 920	2700 x 1200
2700 x 920	3000 x 1200
3000 x 920	

**Thickness**

35mm
40mm
45mm



**Australian Standards:**

AAFD Solid Core doors are manufactured in accordance & compliancy with Australian Standard AS 2688 "Timber Doors"